

# CAL-IN / COBEAL Dehumidifier RECUSORB R-062/082/102/122

Dehumidifying capacity  
at 20°C / 60%RH

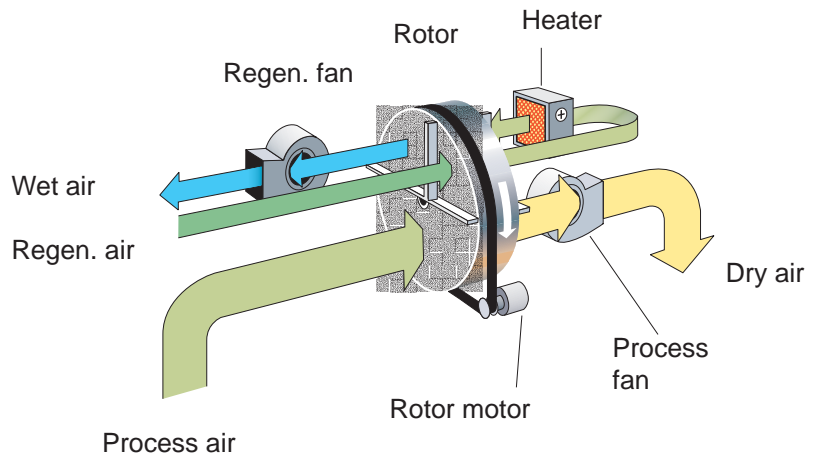
**18 - 95 kg/h**

Dry air flow

**2600 -13 500 m<sup>3</sup>/h**

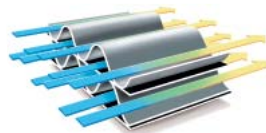


- Washable rotor
- No desiccant carry-over
- Double skin insulated
- Built-in heat recovery
- Low dry air temperature
- Long lifetime



Contains the SSCR rotor  
-one step ahead in  
adsorption technology

The high number of channels  
means that moisture is adsorbed  
with extra efficiency!

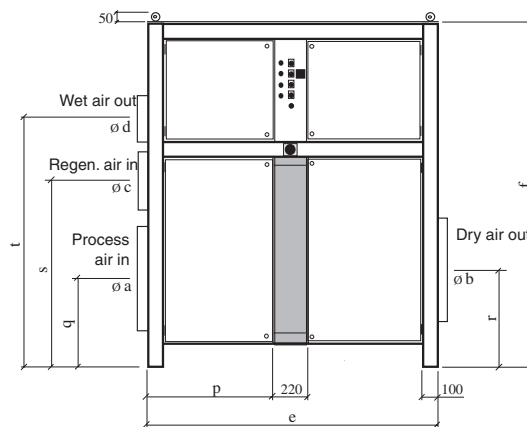
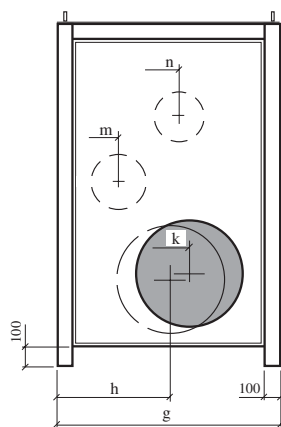
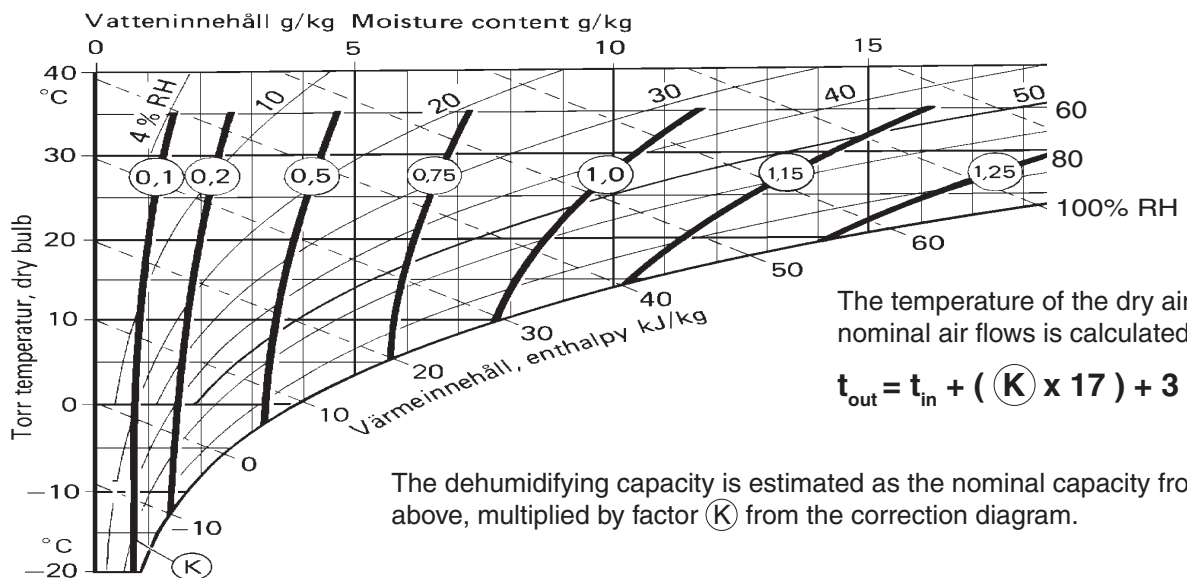


Dehumidifier model	R-062	R-082	R-102	R-122
Nominal capacity *	18 kg/h	37 kg/h	59 kg/h	95 kg/h
Dry air flow ***	2600 m <sup>3</sup> /h	5500 m <sup>3</sup> /h	8200 m <sup>3</sup> /h	13500 m <sup>3</sup> /h
Static pressure at disposal	200 Pa	200 Pa	200 Pa	200 Pa
Wet air flow **	850 m <sup>3</sup> /h	1900 m <sup>3</sup> /h	2900 m <sup>3</sup> /h	4700 m <sup>3</sup> /h
Static pressure at disposal	200 Pa	100 Pa	100 Pa	100 Pa
Heater power	21 kW	42 kW	66 kW	112 kW
Maximum electric consumption	24 kW	49 kW	76 kW	124 kW
Supply fuse 3x 230/400V 50Hz	80 / 35 A	160 / 80 A	250 / 125 A	/ 200 A
Weight	438 kg	550 kg	760 kg	1210 kg

\* Valid for inlet conditions 20°C/ 60%RH. For other inlet conditions the capacity can be calculated by using the correction factor from the diagram shown below.

\*\* Volume flow for density 1,20 kg/m<sup>3</sup>.

\*\*\* Available with electric heater, steam heater or gas heater.



R-	062	082	102	122
a	400	500	630	800
b	315	400	630	800
c	200	315	400	500
d	200	250	315	400
e	1400	1600	1800	2000
f	1650	1800	2100	2300
g	780	1000	1300	1500
h	390	500	650	640
k	510	640	810	960
m	390	340	350	400
n	230	450	770	780
p	590	690	790	890
q	400	450	510	600
r	420	490	570	630
s	790	930	1080	1350
t	1120	1290	1540	1680

[mm]

Subject to change without notice.  
Download installation drawing at [www.dst-sg.com](http://www.dst-sg.com)

**Seibu Giken DST AB**  
Avestag, 33, S-163 53 Spånga, Sweden  
[www.dst-sg.com](http://www.dst-sg.com) E-mail: [info@dst-sg.com](mailto:info@dst-sg.com)  
tel: +46-8 4457720; fax: +46-8 4457739

**Representative:**  
CAL-IN / COBEAL  
[www.CALINTEC.com](http://www.CALINTEC.com)